

Reference Guide

FALL 2020

Origins™
BY TIMBERLAKE



The Timberlake® Advantage



Built by Service®

We think like builders. That means looking for ways to contribute to success by adding value, saving time, and eliminating costs. We're planning ahead to prevent problems instead of fixing them. Designing to save money. Scheduling to make every minute count. Installing for one-trip satisfaction. We're a partner every step of the way.



We focus on cabinets

That's all we've done for the past three decades. When you team up with Timberlake, you benefit from years of experience and refinement. That means high-quality materials, craftsmanship, and service—start to finish.



Quality meets value

Origins by Timberlake showcases modern styling in an economical design offering. We make it easy to choose the perfect combination of features for your needs and budget.

Table of Contents

DOOR STYLES

- 6 ASHBURN
- 8 CHATHAM
- 10 MALONE

PRODUCT SPECIFICATIONS

- 14 AN INSIDE LOOK
- 18 WALL CABINETS
- 19 BASE CABINETS
- 21 UTILITY, OVEN & VANITY CABINETS
- 22 ACCESSORY ITEMS
- 24 MOLDING
- 25 HARDWARE

OVERVIEW

- 26 FUNCTIONAL KITCHEN ADDITIONS
- 28 AT A GLANCE
- 30 IMPORTANT INFORMATION

Door Styles

ORIGINS BY TIMBERLAKE

Origins by Timberlake boasts three finely-crafted, designer-favorite door styles that combine style with affordability.



CHATHAM PEBBLE



Ashburn

COLLECTION

STAIN

The stain-finish options of the Ashburn collection add beautiful depth to any kitchen. The standard overlay and raised-panel silhouette of this door style, in Cider or Sienna, is a rich look that will bring your kitchen to life.

Features

CONSTRUCTION

Mortise and tenon
Veneer insert
Raised panel

FINISH

Stain

HARDWARE

Recommended

DOOR DETAILS

Standard overlay



CIDER



SIENNA



ASHBURN CIDER



ASHBURN SIENNA



ASHBURN WHITE

THERMOFOIL

Fresh and sunny, Ashburn White makes any kitchen feel larger and more open. Use it for a timeless, neutral look or the backdrop for pops of color. The clean lines of this Ashburn full overlay door complement many kitchen styles, and the durable thermofoil finish means the look you love will last for years.

Features

CONSTRUCTION

Routed MDF
Raised panel

FINISH

Thermofoil

DOOR DETAILS

Full overlay

HARDWARE

Required



WHITE



Chatham

COLLECTION

THERMOFOIL

The clean, simple lines of the Chatham Shaker-style door make a bold statement in any home. The sophistication of the full overlay door is a designer trend in today's modern kitchen. With a durable thermofoil finish that will protect your cabinets from everyday wear and tear, Chatham does not disappoint.

Features

CONSTRUCTION

Routed MDF
Recessed panel

FINISH

Thermofoil

DOOR DETAILS

Full overlay

HARDWARE

Required



WHITE

PEBBLE



CHATHAM WHITE



CHATHAM PEBBLE



CHATHAM UMBER

STAIN

Chatham's deep umber finish creates a look of luxury and rich comfort in today's family kitchen. The full overlay, Shaker-style doors add an air of elegant simplicity. Together, the door profile and upscale hue are at home in a variety of settings.

Features

CONSTRUCTION

Mortise and tenon
Veneer insert
Recessed panel

FINISH

Stain

DOOR DETAILS

Full overlay

HARDWARE

Required



UMBER



Malone

COLLECTION

STAIN

The timeless appeal of a Shaker-styled door shines in the Malone collection. The fresh grey brown-tone stain gently highlights the beauty of the hardwood, while the slight shadowed details add drama, elevating any space into a premium kitchen.

Features

CONSTRUCTION

Mortise and tenon
Veneer insert
Recessed panel

FINISH

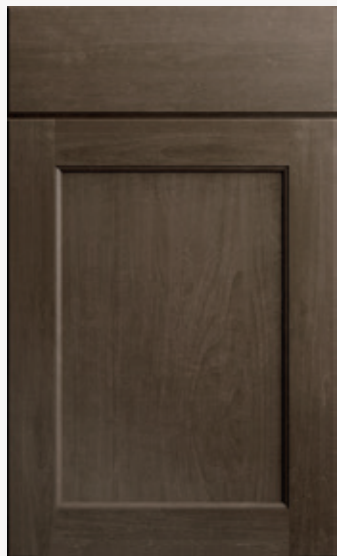
Stain

HARDWARE

Required

DOOR DETAILS

Full overlay



DUSK



Product Specifications

ORIGINS BY TIMBERLAKE

Create the kitchen that perfectly fits your lifestyle. You'll find the quality construction and features at prices that help you get the most kitchen for your budget—and years of enjoyment.



CHATHAM WHITE



An Inside Look

ORIGINS BY TIMBERLAKE

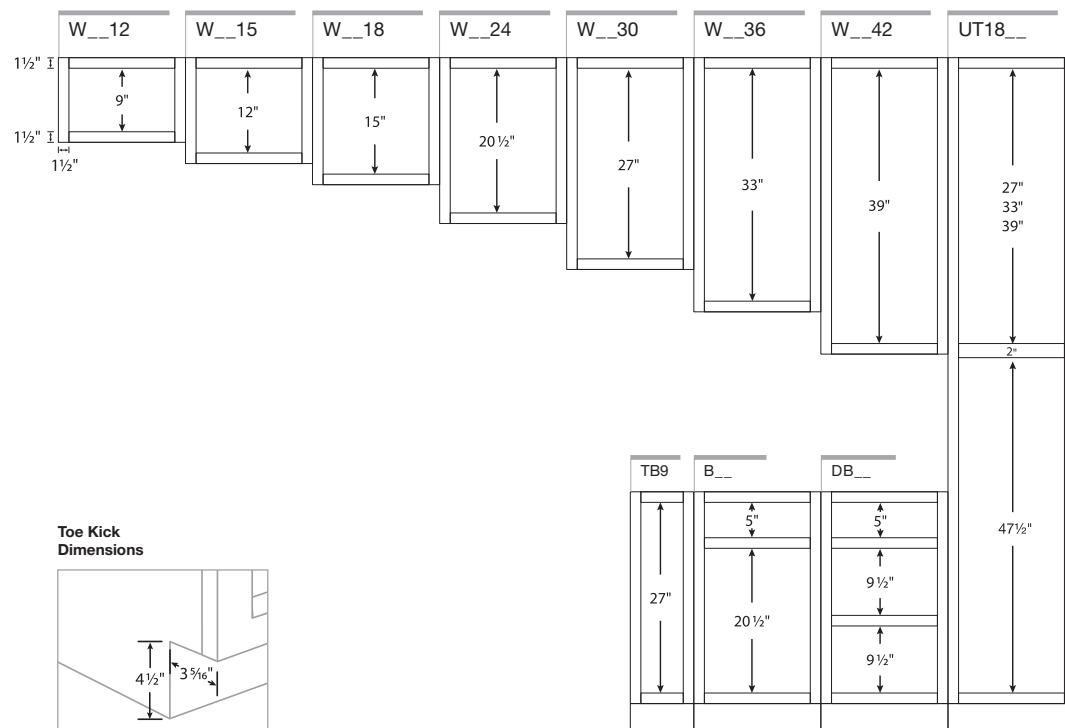
All cabinetry manufactured by Timberlake is certified by the Kitchen Cabinet Manufacturers Association (KCMA). Timberlake has received certification by KCMA Environmental Stewardship Program on all products.



CABINET OPENING DIMENSIONS

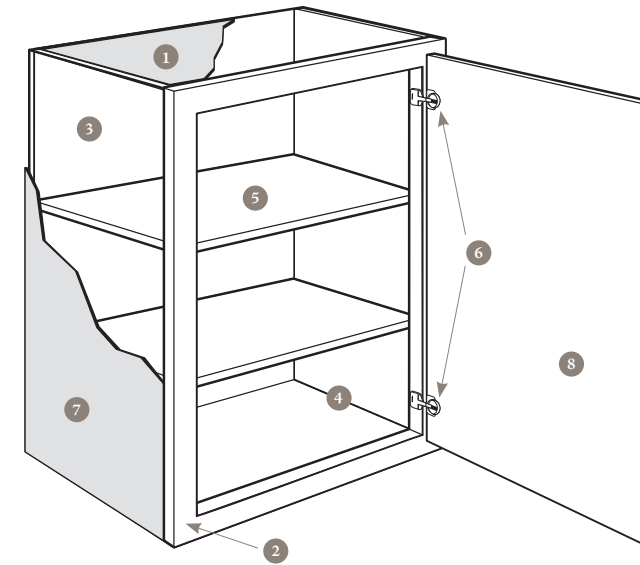
Illustrations specify dimensions of vertical stiles and horizontal rails, inset toe kick, and standard interior opening heights.

When selecting cabinetry for installation above or near any appliance, refer to the appliance manufacturer's specification for clearance and venting requirements.



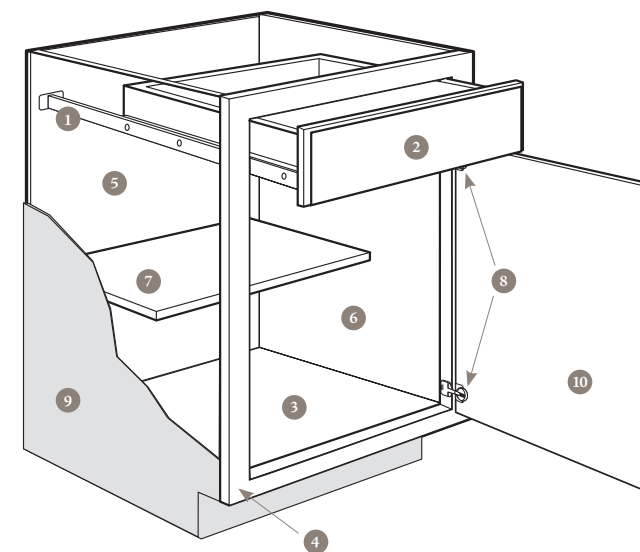
CONSTRUCTION FEATURES

Wall Cabinets



- 1 Top/Bottom Panels:** 3/8" engineered wood
- 2 Face Frame:** 1 1/2" wide frame material
- 3 Back Panel:** Full 3/8" back panel
- 4 Interiors:** Natural laminate finish on engineered wood
- 5 Shelves:** 3/4" thick adjustable shelves
- 6 Hinges:** Fully concealed and adjustable
- 7 End Panels:** 1/2" engineered wood with laminated exterior to match cabinet finish
- 8 Door:** Reversible door on single-door cabinets for left or right opening; hinged on the left from the factory; double-door cabinets are butt doors with no center stile

Base Cabinets



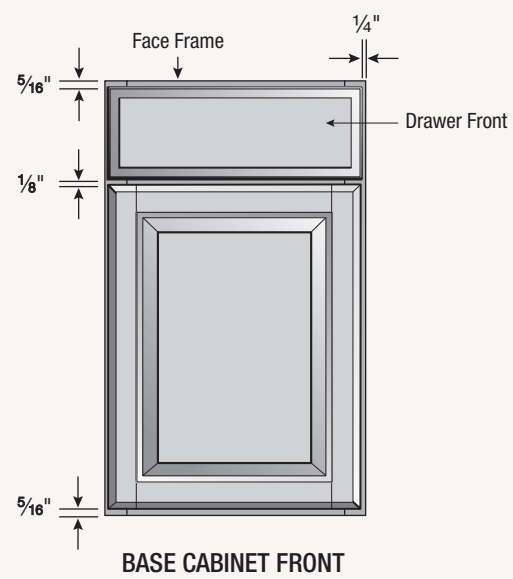
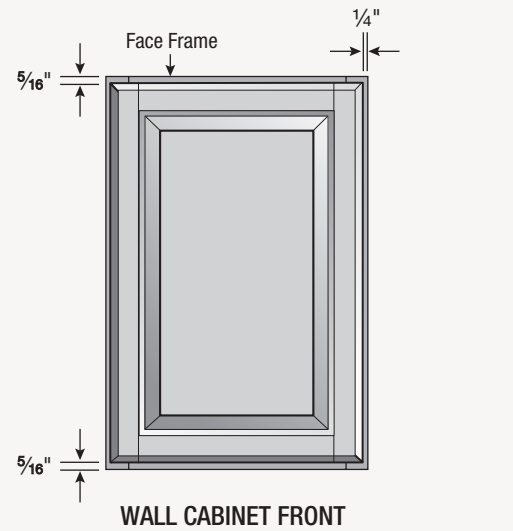
- 1 Drawer Glides:** 3/4" access ball bearing
- 2 Drawer Box:** Hardwood, 4-sided drawer box with fully encapsulated bottom
- 3 Bottom Panels:** 3/8" engineered wood
- 4 Face Frame:** 1 1/2" wide frame material
- 5 Back Panel:** Full 3/8" hardwood with a natural laminate interior
- 6 Interiors:** Natural wood-grain laminate finish on engineered wood
- 7 Shelf:** 3/4" thick adjustable half-depth shelf
- 8 Hinges:** Fully concealed and adjustable
- 9 End Panels:** 1/2" engineered wood with laminated exterior to match cabinet finish
- 10 Door:** Reversible door on single-door cabinets for left or right opening; hinged on the left from the factory; double-door cabinets are butt doors with no center stile

OVERLAY DIMENSIONS

These illustrations specify the relationship between the cabinet face frame and standard overlay or full overlay doors. They show the amount of the cabinet face frame that is visible when standard overlay or full overlay doors are selected.

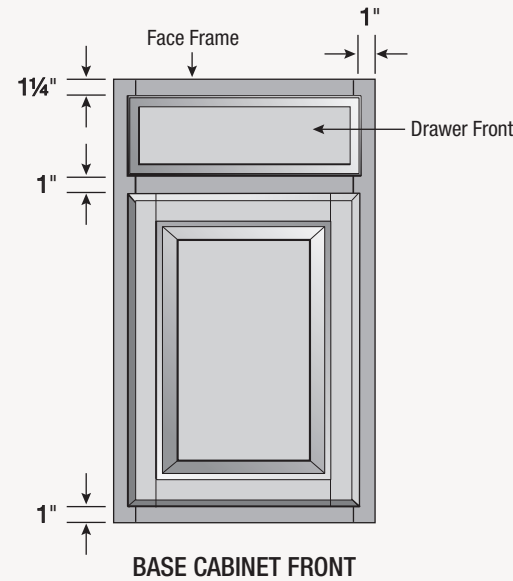
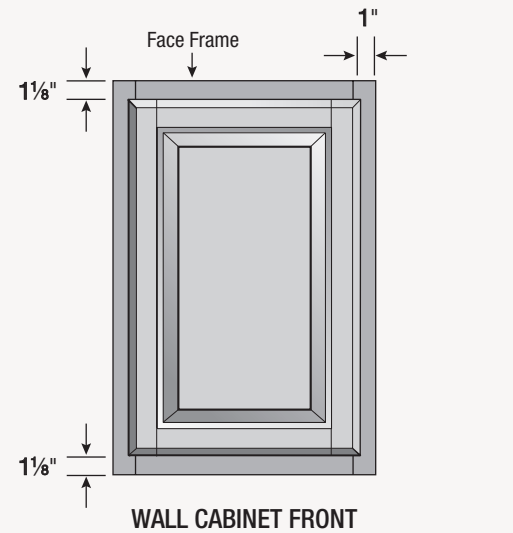
Full Overlay

Full overlay doors are sized to cover nearly all of the cabinet face frame. Full overlay door styles require decorative hardware. To facilitate proper door operation, include at least a 1" filler between the hinged side of full overlay door styles and deeper adjacent objects including cabinets, walls, appliances, and countertops.



Standard Overlay

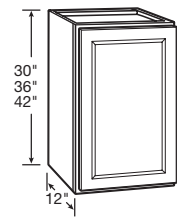
Standard overlay doors are sized to show about an inch of the cabinet face frame, giving the door some visual depth. Some door styles do not require decorative hardware.



WALL CABINETS

SPECIFICATIONS

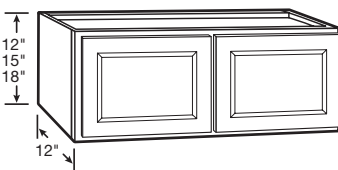
Wall Cabinet + 1 Door



- Includes two adjustable shelves
- Hinged left, field reversible

30" HIGH	36" HIGH	42" HIGH
W930	W936	W1242
W1230	W1236	W1542
W1530	W1536	W1842
W1830	W1836	W2142
W2130	W2136	W2442
W2430	W2436	

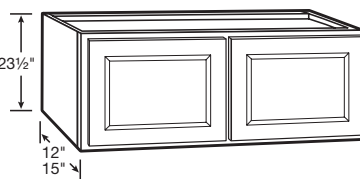
Wall Cabinet + 2 Butt Doors



- No shelf

12" HIGH	15" HIGH	18" HIGH
W3012 BUTT	W3015 BUTT	W3018 BUTT
W3612 BUTT	W3615 BUTT	W3618 BUTT

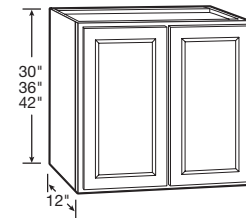
Wall Cabinet + 2 Butt Doors



- Includes one adjustable shelf

23 1/2" HIGH	15" Deep
W3024 BUTT	W3024 X 15DP BUTT
W3624 BUTT	

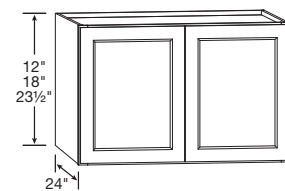
Wall Cabinet + 2 Butt Doors



- Includes two adjustable shelves

30" HIGH	36" HIGH	42" HIGH
W2730 BUTT	W2736 BUTT	W2742 BUTT
W3030 BUTT	W3036 BUTT	W3042 BUTT
W3330 BUTT	W3336 BUTT	W3342 BUTT
W3630 BUTT	W3636 BUTT	W3642 BUTT

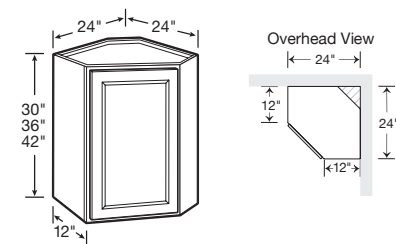
24" Deep Wall Cabinet + 2 Butt Doors



- Designed for use with Refrigerator Return Kit
- Must be attached to back wall and either cabinet or walls on both sides
- 23 1/2" high comes with one adjustable shelf

12" HIGH	18" HIGH	23 1/2" HIGH
W3612 X 24DP BUTT	W3618 X 24DP BUTT	W3624 X 24DP BUTT

Corner Wall Cabinet



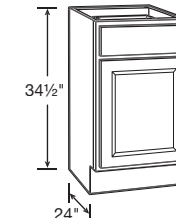
- Installs in a 24" x 24" wall area
- 30" high includes one adjustable shelf
- 36" high and 42" high include two adjustable shelves
- Hinged left, field reversible

30" HIGH	36" HIGH	42" HIGH
CW2430	CW2436	CW2442

BASE CABINETS

SPECIFICATIONS

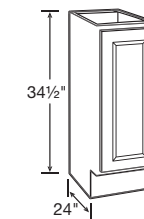
Base + 1 Door and 1 Drawer



- Ball-bearing drawer glides
- One half-depth adjustable shelf included
- Hinged left, field reversible

34 1/2" HIGH	
B12	B21
B15	B24
B18	

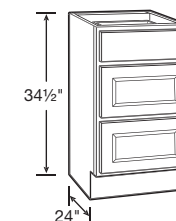
Full-Height Base Cabinet + 1 Door



- One half-depth adjustable shelf included
- Hinged left, field reversible

34 1/2" HIGH
TB9

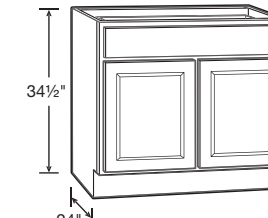
Drawer Base Cabinet + 3 Drawers



- 18" wide and 24" wide include ball-bearing drawer glides
- 30" wide and 36" wide include full-extension, heavy-duty drawer glides on all three drawers
- Deep drawers feature five-piece drawer fronts

34 1/2" HIGH	
DB18	DB30
DB24	DB36 1TD

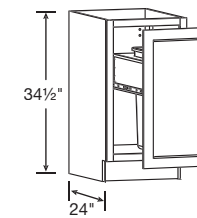
Base + 2 Butt Doors and 1 Drawer



- Ball-bearing drawer glides
- One half-depth adjustable shelf included

34 1/2" HIGH
B27 BUTT
B30 BUTT
B33 BUTT
B36 1TD BUTT

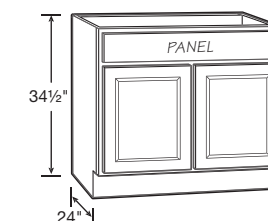
Full-Height Base Cabinet + 1 Door with Wastebasket Pull-Out



- Includes a 48-quart waste container

34 1/2" HIGH
BWBT18-1 FH

Sink/Cooktop Base + 2 Butt Doors and 1 Panel



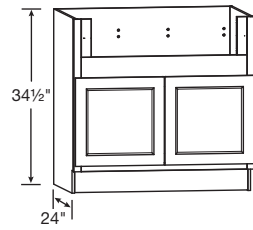
- Full-height back panel
- No shelf
- Subtract 1 1/2" from width and 1 1/8" from depth for available sink bowl opening
- Refer to sink/cooktop manufacturer's specifications for adequate clearance and required installation materials
- Touch-up kit included

34 1/2" HIGH
SB30 BUTT TU
SB36 BUTT TU

BASE CABINETS

SPECIFICATIONS

Deep Sink/Range Base + 2 Butt Doors

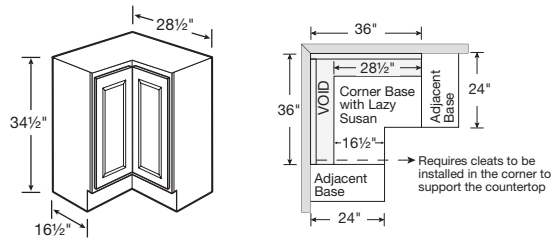


- 2" side stiles and 4" rail are trimmable to accommodate various size apron-front sinks and cooktops
- 32" width opening for sinks—can be trimmed to 34" width
- 7 1/2" height opening trimmable to 11" height
- No shelf
- Refer to sink/cooktop manufacturer's specifications for adequate clearance and required installation materials
- Touch-up kit included

34 1/2" HIGH

DSB36 BUTT TU

Corner Base Carousel + Spin Unit

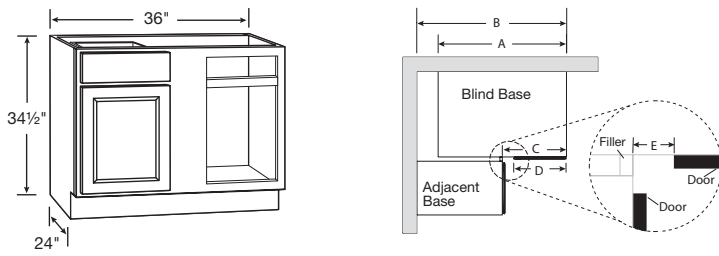


- Installs in a 36" x 36" wall area
- Two-piece overlay door hinged together in the middle
- Two 360° independently rotating metal racks
- Exterior side panels are natural laminate
- Hinged left, reversible in field
- Additional space recommended if appliance is installed on the hinged side of this cabinet for proper door operation
- If unit has an exposed side, order an end panel separately

34 1/2" HIGH

CAR36

Blind Corner Base + 1 Door and 1 Drawer



OVERLAY	A	B	C	D	E	MAX B	MIN B
STANDARD OVERLAY	36"	42"	18"	13"	4"	46 1/2"	39 1/4"
FULL OVERLAY	36"	42"	18"	14 3/4"	3 3/8"	46 1/2"	40 3/4"

*Dimensions C & E only apply when cabinet is pulled to 42"

- Ball-bearing drawer glides
- Dimension MIN B assumes no use of decorative hardware
- Blind base door and drawer are installed in the left section
- Door and drawer can be reversed in the field, as blind sections are identical
- Refer to the chart for specifications
- Must order filler separately

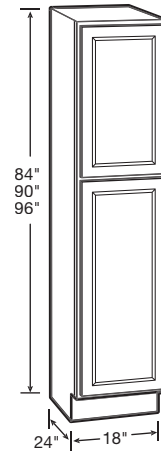
34 1/2" HIGH

BLB36/39

UTILITY CABINET

SPECIFICATIONS

Utility Cabinet + 2 Doors



- 84" high and 90" high include three adjustable shelves
- 96" high includes four adjustable shelves
- 96" high has removable toe kick that is field installed
- Upper door lines up with 30", 36", and 42" high wall cabinets
- Shelves ship separately for field installation

84" HIGH

UT188424 AS

90" HIGH

UT189024 AS

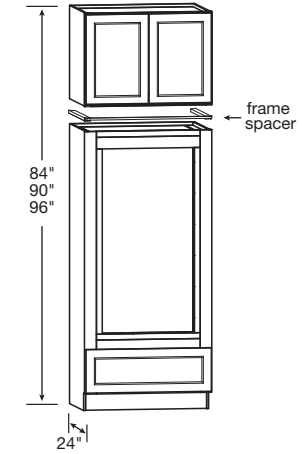
96" HIGH

UT189624 AS

OVEN CABINET

SPECIFICATIONS

Double Oven Cabinet + 2 Butt Doors and 1 Drawer



- Includes drawer with full-extension, heavy-duty drawer glides
- Includes 24" deep wall cabinet (ships separately)
- Overhead wall cabinet is not pre-installed to oven cabinet, comes as two pieces, boxed separately
- Rails and stiles around oven opening are trimmable
- Cut-out dimensions:
Width: 24" minimum, 30" maximum
Height: 47 3/8" minimum, 52 1/8" maximum
- Frame spacer included in OVD339624 BUTT only
- 96" high double oven overhead wall cabinet is 23 1/2" high

84" HIGH

OVD338424 BUTT

90" HIGH

OVD339024 BUTT

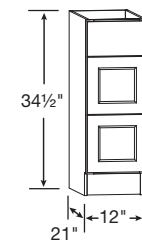
96" HIGH

OVD339624 BUTT

VANITY CABINETS

SPECIFICATIONS

Vanity Drawer Base + 3 Drawers



- Deep drawers feature five-piece drawer fronts

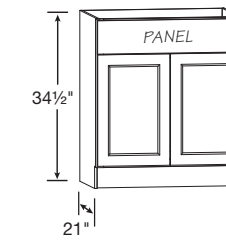
34 1/2" HIGH

VDB1234H

VDB1534H

VDB1834H

Vanity Sink Base + 2 Butt Doors and 1 Drawer Panel



- No shelf
- Subtract 1 1/2" from width and 1 1/8" from depth for available sink bowl opening
- Refer to sink manufacturer's specifications for adequate clearance and required installation materials

34 1/2" HIGH

VSB2434H BUTT

VSB2734H BUTT

VSB3034H BUTT

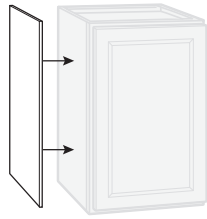
VSB3334H BUTT

VSB3634H BUTT

ACCESSORY ITEMS

SPECIFICATIONS

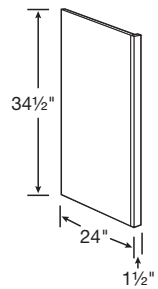
Veneer End Paneling



- Finished veneer panels fit flush
- Stained door styles feature stained veneers
- White and Pebble panels are laminate
- Wall panels are 11 1/4" deep, 30" or 42" high
- Base panels are 23 1/4" deep x 34 1/2" high
- Finished panel is 48" wide x 34 1/2" high

WALL PANEL	BASE PANEL	FINISHED PANELING
WEP30 WEP42	BEP34	FP4834

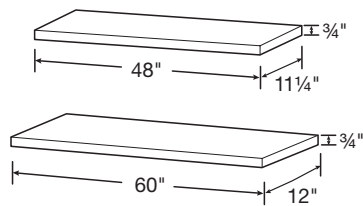
Dishwasher Return



- Reversible for left or right installation
- Exterior finish to match
- Field trimmable to 1"
- Can be notched for toe kick in the field

34 1/2" HIGH
DWR1_5

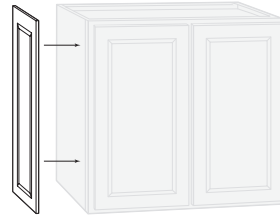
Finished Shelves



- 3/4" depth difference between shelf lengths
- Laminate finish on five sides

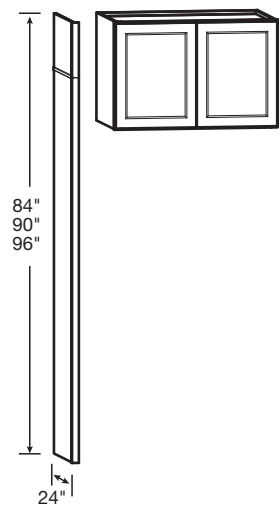
48" WIDE	60" WIDE
11 1/4" Deep FS4812	12" Deep FS6012

Decorative Matching Doors



WALL	BASE		
12" Deep DMDW30 DMDW36 DMDW42	15" Deep DMDW30 15D	18" Deep DMDW30 18D	24" Deep DMDB

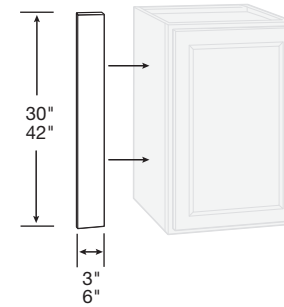
Refrigerator Return Kit



- Kit includes one 84" tall end panel, one 12" tall panel, one 6" tall panel, and one piece of scribe molding
- Kits and Deep Refrigerator Wall Cabinets combine to achieve 84", 90", or 96" overall heights
- Pairs with 36" wide, 24" deep wall cabinets, sold separately—see Wall Cabinets section
- Refrigerator Return Kit does not create a stand-alone cabinet; must be anchored to other cabinets/wall studs to be secure

96" HIGH
RR96

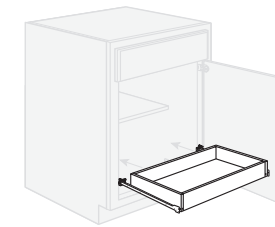
Wall & Base Fillers



- Fillers are 3/4" plywood finished on the face only

3" FILLER	6" FILLER
UF3P UF342P	UF6P UF642P

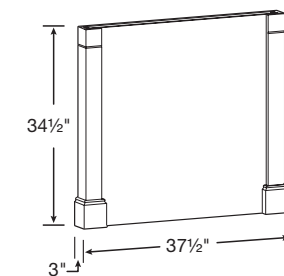
Sliding Shelf Kit



- Ball-bearing drawer glides
- Hardwood drawer box SSK24 fits in 24" wide base
- Hardwood drawer box SSK30 fits in 30" wide base
- Ready to assemble accessory kit requiring field installation
- Kit includes sliding shelf and all hardware

SSK24
SSK30

Decorative Island End Panel Kit



- One post ships loose
- Panel can be cut to accommodate different depths

34 1/2" HIGH
ISLAND PANEL KIT

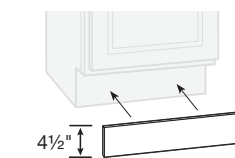
Utility Filler



- Fillers are 3/4" plywood finished on the face only

91 1/2" HIGH
UF392P

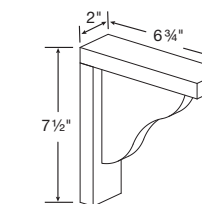
Toe Kick



- 91 1/2" long

BTK8

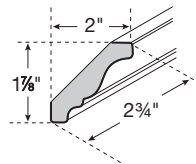
Countertop Corbel



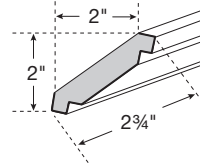
- For decorative use only

CS8

Crown Moldings



TRADITIONAL CROWN



SHAKER CROWN

- 91 1/2" long
- Traditional Crown not available on Chatham door style
- Shaker Crown not available on Ashburn door style
- Bold line indicates finished surfaces

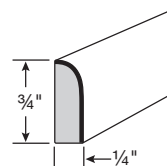
TRADITIONAL CROWN

CM8

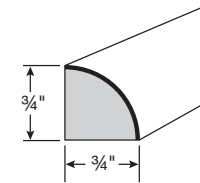
SHAKER CROWN

ACM8

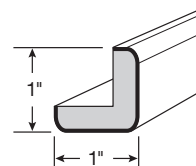
Scribe Molding



SCRIBE



QUARTER ROUND



OUTSIDE CORNER

- 91 1/2" long
- Bold line indicates finished surfaces

SCRIBE

SM8

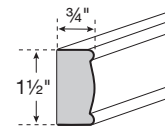
QUARTER ROUND

SHM8

OUTSIDE CORNER

OCM8

Light Rail Molding

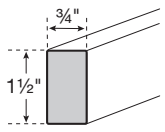


- 91 1/2" long
- Bold line indicates finished surfaces

DECORATIVE EDGE

LBM8

Molding Stock

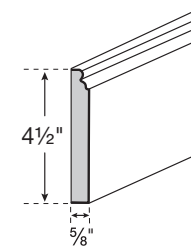


- 91 1/2" long
- Bold line indicates finished surfaces

SQUARE EDGE

SS1_596

Base Molding



- 91 1/2" long
- Bold line indicates finished surfaces

BASE

CLBM8

Classic Knob + Satin Nickel



KNOB 1173SN

Classic Pull + Satin Nickel



- 3" center
- Overall length 4 3/8"

PULL 1708SN

T-Bar Pull + Satin Nickel



- 3" center
- Overall length 5"

PULL 1701SN



Functional Kitchen

ADDITIONS

SMART ADDITIONS INCREASE FUNCTIONALITY FOR A KITCHEN THAT'S A PLEASURE TO USE.

Functional additions help homeowners unclutter their counters and drawers. They get more work and storage space, and instant access to kitchen tools. These additions make life in the kitchen a piece of cake.



STANDARD BUTT DOORS ON CABINETS 27" WIDE AND UP



FULLY CONCEALED AND ADJUSTABLE HINGES



DEEP SINK BASE



REFRIGERATOR RETURN KIT WITH DEEP WALL CABINET



FULLY ASSEMBLED WASTEBASKET PULL-OUT



3-DRAWER BASE



At a Glance

ORIGINS BY TIMBERLAKE

CARE & CLEANING

While our laminate, staining, and wood finishing processes promote durability, care should be taken to preserve the original factory finish:

- Wipe up spills immediately
- Use mild soaps only
- Be sure to read all cabinet care guidelines and cleaning product instructions carefully

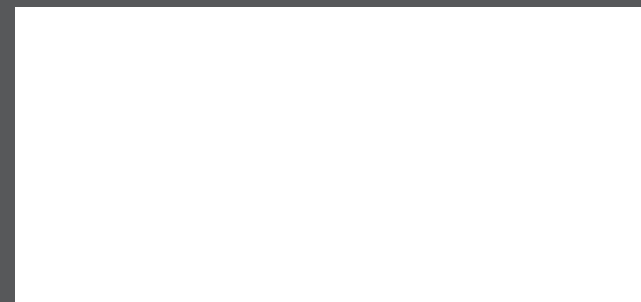
Use a touch-up stick to fill any scratches or nicks and remove excess residue, leaving a smooth surface. Touch-up sticks are available by calling Timberlake Customer Care at 800-967-9674.

CHOOSE YOUR MATERIAL



HARDWOOD

Hardwood cabinetry has a dense structure and comes from a combination of deciduous trees such as maple, oak, beech, birch, cherry, hickory, poplar, or ash. Natural colors range from light blonde to dark reddish-brown tones. These hardwoods may contain mineral streaks, slight differences in graining, and color variations.

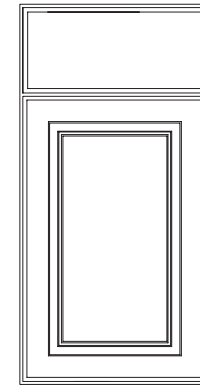


THERMOFOIL

Thermofoil is a process whereby a thick vinyl film is bonded permanently to a warp-resistant engineered wood core. Because the color is consistent throughout the film, the surface is durable, easy to clean, and resistant to chipping and cracking.

DOOR STYLES

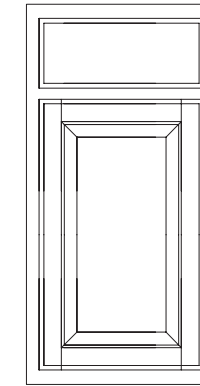
Ashburn



Door: Raised Panel
Overlay: Full Overlay
Construction: Routed MDF
Hardware: Required



WHITE THERMOFOIL
15W



Door: Raised Panel
Overlay: Standard Overlay
Construction: Hardwood Mortise & Tenon
Hardware: Recommended

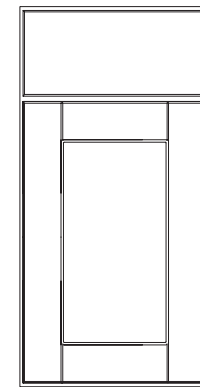


SIENNA STAIN
1COG



CIDER STAIN
1MO

Chatham



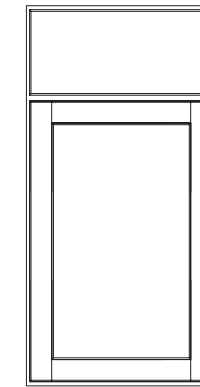
Door: Recessed Panel
Overlay: Full Overlay
Construction: Routed MDF
Hardware: Required



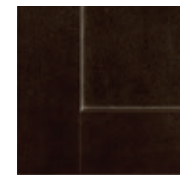
WHITE THERMOFOIL
15SW



PEBBLE THERMOFOIL
15DV

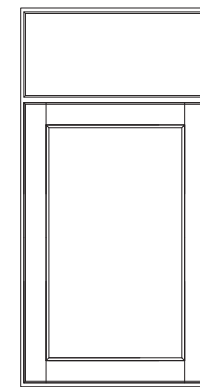


Door: Recessed Panel
Overlay: Full Overlay
Construction: Hardwood Mortise & Tenon
Hardware: Required



UMBER STAIN
15JM

Malone



Door: Recessed Panel
Overlay: Full Overlay
Construction: Hardwood Mortise & Tenon
Hardware: Required



DUSK STAIN
1BDL



Important Information

ORIGINS BY TIMBERLAKE

1-YEAR LIMITED WARRANTY

1-year limited warranty applies to Origins by Timberlake cabinets. Timberlake hereby warrants to the original homeowner, for residential applications only, that all cabinets and accessories manufactured and sold by Timberlake are free from defects in material and workmanship for a period of one year from the date: (a) that you purchase your new home, or (b) that you install new Timberlake cabinets or accessories in your remodeled home, as the case may be. This warranty is expressly limited to repair or replacement of the defective part at the discretion of Timberlake and does not include labor for removal or replacement. This warranty does not extend to defects caused by improper handling, storage, installation, assembly or disassembly, intentional damage, product modifications, exposure to the elements including humidity which may result in warping or splitting, accidental misuse, abuse, or negligence.

Natural woods may vary in texture, color, and wood grain, and exhibit subtle changes as they age. For example, wood joints may eventually have visible cracking around the joint area, and cabinet colors may darken or lighten over time. Sunlight, smoke, moisture, household cleaners, and other environmental conditions may cause materials to vary from their original color and/or to warp, split, or crack. These variations are considered to be the nature of the material in relation to its environmental exposure and are not covered under this warranty.

LIMITATIONS & DISCLAIMERS

TIMBERLAKE MAKES NO OTHER WARRANTIES OTHER THAN THOSE SET FORTH HEREIN, AND ALL OTHER WARRANTIES ARE HEREBY DISCLAIMED. THE IMPLIED WARRANTIES OF MERCHANTABILITY AND FITNESS FOR A PARTICULAR PURPOSE ARE LIMITED IN DURATION TO THE LENGTH OF THE HOMEOWNER'S WARRANTY PERIOD. THE LIMITED WARRANTIES SET FORTH HEREIN ARE LIMITED TO THE FIRST AND ORIGINAL HOMEBUYER, AS THE CASE MAY BE, AND ARE NOT TRANSFERABLE THEREAFTER. IN NO EVENT SHALL TIMBERLAKE BE LIABLE FOR INCIDENTAL OR CONSEQUENTIAL DAMAGES TO THE HOMEOWNER OR TO ANY THIRD PARTY, INCLUDING, WITHOUT LIMITATION, DAMAGES ARISING FROM PERSONAL INJURY, LOST PROFITS, LOSS OF BUSINESS OPPORTUNITY, LOSS OF PROPERTY, ECONOMIC LOSSES, OR STATUTORY OR EXEMPLARY DAMAGES, WHETHER FROM NEGLIGENCE, WARRANTY, STRICT LIABILITY, OR OTHERWISE. Some states do not allow the exclusion or limitation of incidental or consequential damages, or limitations on how long an implied warranty lasts, so the above limitations and exclusions may not apply to you. This warranty gives you specific legal rights, and you may also have other rights, which vary from state to state.

CLAIMS

All claims for defective cabinets and accessories must be submitted to Timberlake in writing and must specify the defects present in the cabinets and accessories. After Timberlake has had an opportunity to inspect the cabinets and accessories, they will, at their discretion, either replace defective cabinets and accessories or repair any defects in the cabinets and accessories. All claims must be submitted to the following address: Timberlake Claims Department, Post Office Box 1980, Winchester, Virginia 22604.

WARRANTY INFORMATION FOR COMMERCIAL PURCHASERS

To merchants who purchase Timberlake cabinets and accessories for resale in any form, including builders, dealers and distributors, Timberlake extends the following warranty: Timberlake will replace, without charge, any cabinet and accessory that is not saleable because of defects in material or manufactured workmanship discovered within one year from the date of delivery to merchant. Notice of claim under this warranty must be given promptly, in no case later than ninety (90) days after defect becomes known to merchant. THIS WARRANTY IS IN LIEU OF ALL OTHER WARRANTIES, EXPRESS OR IMPLIED. TIMBERLAKE HEREBY DISCLAIMS ALL IMPLIED WARRANTIES, INCLUDING THE WARRANTIES OF MERCHANTABILITY AND FITNESS FOR A PARTICULAR PURPOSE. THE REMEDY OF REPLACEMENT IS THE SOLE AND EXCLUSIVE REMEDY FOR TIMBERLAKE'S OBLIGATIONS ARISING FROM THE SALE OF ITS CABINETS AND ACCESSORIES. IN NO EVENT WILL TIMBERLAKE BE LIABLE FOR INCIDENTAL OR CONSEQUENTIAL LOSS OR DAMAGES, including, without limitation, costs of installation, removal or reinstallation, damage to other property, loss of profits, loss of goodwill, or other economic loss, whether such incidental or consequential loss or damage is claimed on account of breach of warranty, breach of contract, negligence, strict liability in tort, or any other legal theory. CABINETS AND ACCESSORIES SOLD FOR RESALE ARE ALL SUBJECT TO THESE TERMS, AND ALL OFFERS ARE EXPRESSLY CONDITIONED UPON ACCEPTANCE OF THESE TERMS.



YOUR DREAM HOME
starts here

Origins
BY TIMBERLAKE

ORIGINS BY TIMBERLAKE IMPORTANT INFORMATION



TIMBERLAKE[®]
CABINETS | BUILT BY
SERVICE

P.O. BOX 1980
WINCHESTER, VIRGINIA 22604
WWW.TIMBERLAKE.COM

© 2020 American Woodmark Corporation
9/20 TBL97384 5M

Photography is for illustration purposes only. Actual colors may vary slightly due to the printing process. For actual color selections, please consult your Timberlake representative. Every effort was made to assure accuracy of the information contained herein at the time of printing; however, Timberlake makes no representations to such accuracies. If you would like further clarification about any of our products or processes, please call Timberlake Customer Care.